

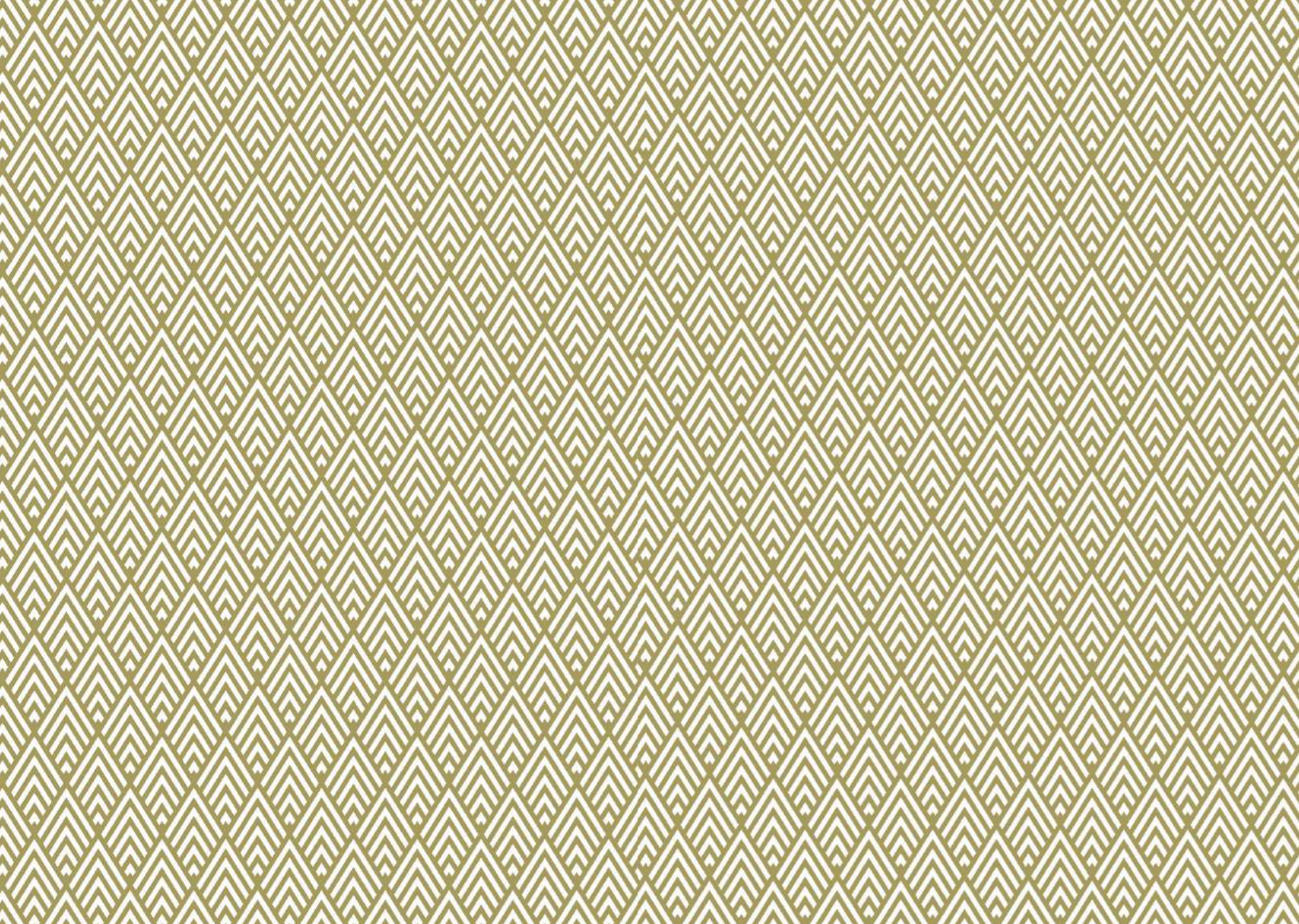


THE WESTBURY

THE DOYLE COLLECTION • DUBLIN



EST. 1928
THE LEADING HOTELS
OF THE WORLD®



ICONIC CHARM
MEETS VIBRANT
CREATIVITY IN DUBLIN'S
METROPOLITAN HEART





WELCOME TO THE WESTBURY

The Westbury, a member of Leading Hotels of the World, not only surrounds its guests in sophistication and style, it places them at the very centre of Dublin's social and cultural riches.

From the moment guests ascend the hotel's central staircase, they are sure to be charmed. Take the gracious Gallery, with its captivating art collection and legendary afternoon tea, The Sidecar bar, Balfes Bar & Brasserie and signature restaurant WILDE. Completing the picture are luxurious guest rooms and suites- showcasing the best of Irish design.

Yet, it is the warmth of welcome that sets the seal on this haven of luxury.



GUEST ROOMS

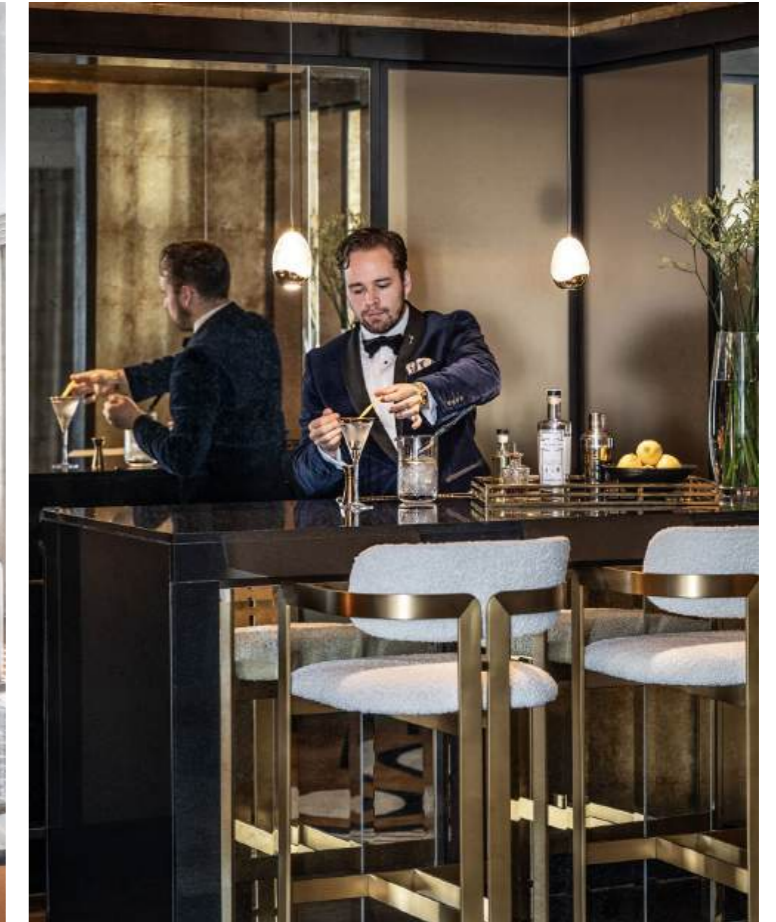


The epitome of understated luxury, guest rooms and suites at The Westbury provide spacious accommodation with thoughtful contemporary design, showcasing the best of Irish and international design combined with the latest technology.

SUITES

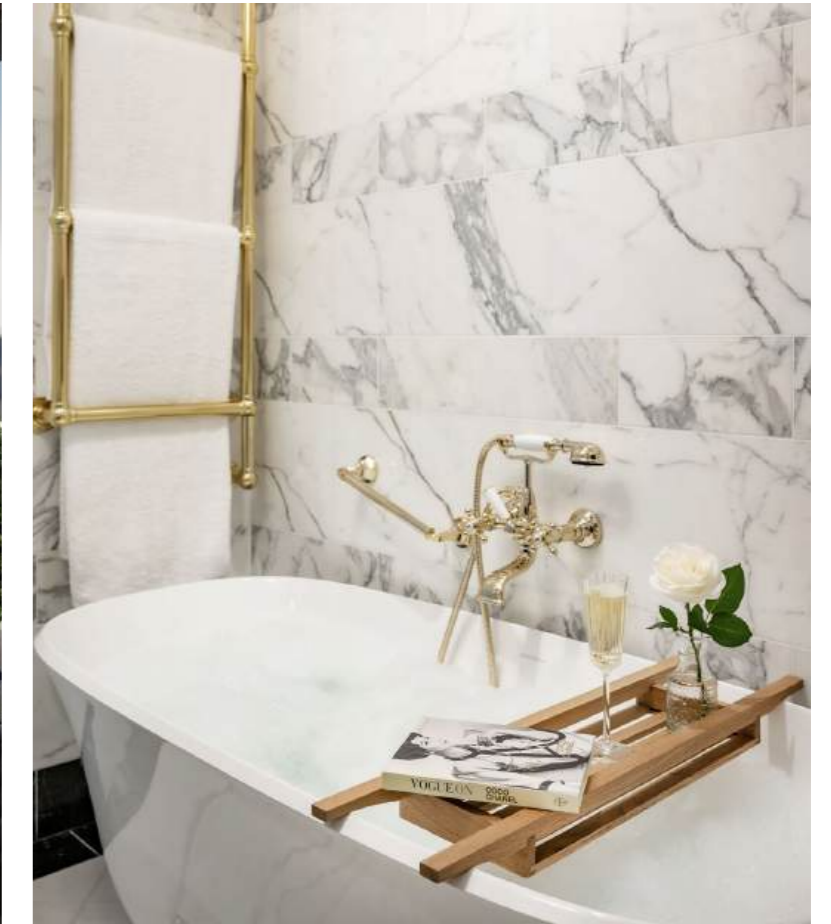


THE P.V. DOYLE SUITE



The P.V. Doyle Suite is set on the 6th floor in a secluded wing of the hotel and has been entirely refurbished to embrace a new level of luxury in keeping with the evolving demands of the modern traveller.

SUITES



In our suites, guests can expect the comfort of luxury apartment living alongside services and amenities befitting a five-star Hotel, including the most comfortable beds and armchairs, glamorous mirrored cocktail bars and sumptuous four-piece marble bathrooms.



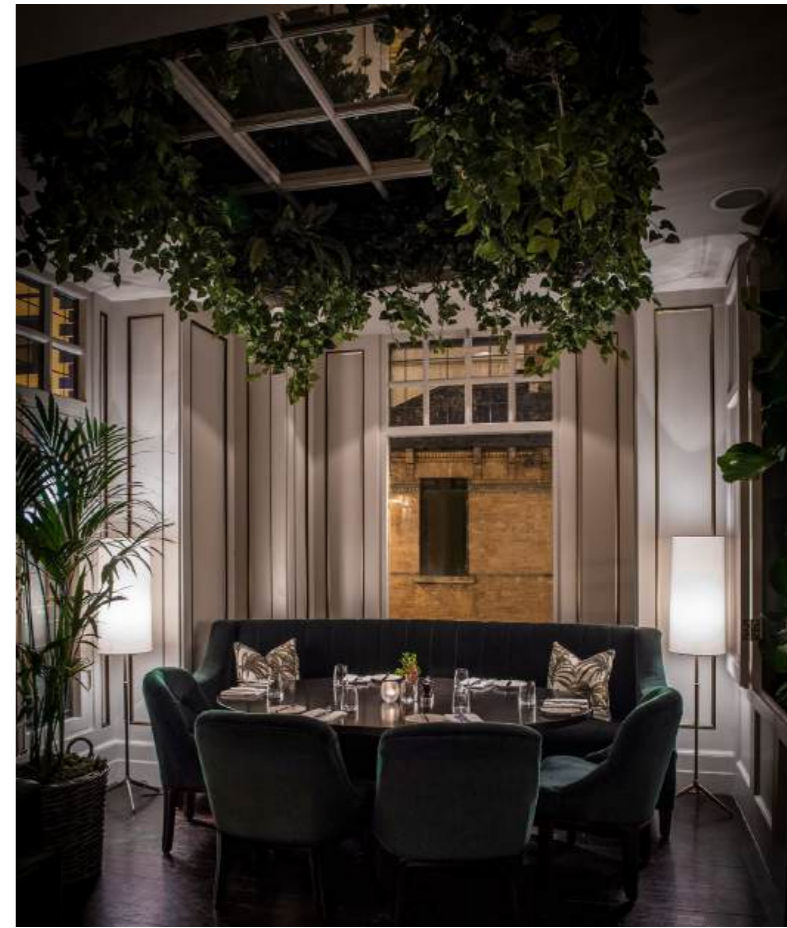
THE GALLERY



The Gallery, the hotel's design showpiece and home to one of Ireland's foremost privately-owned art collections, is a beautiful and unique setting in which to linger over The Westbury's iconic Afternoon Tea.



WILDE



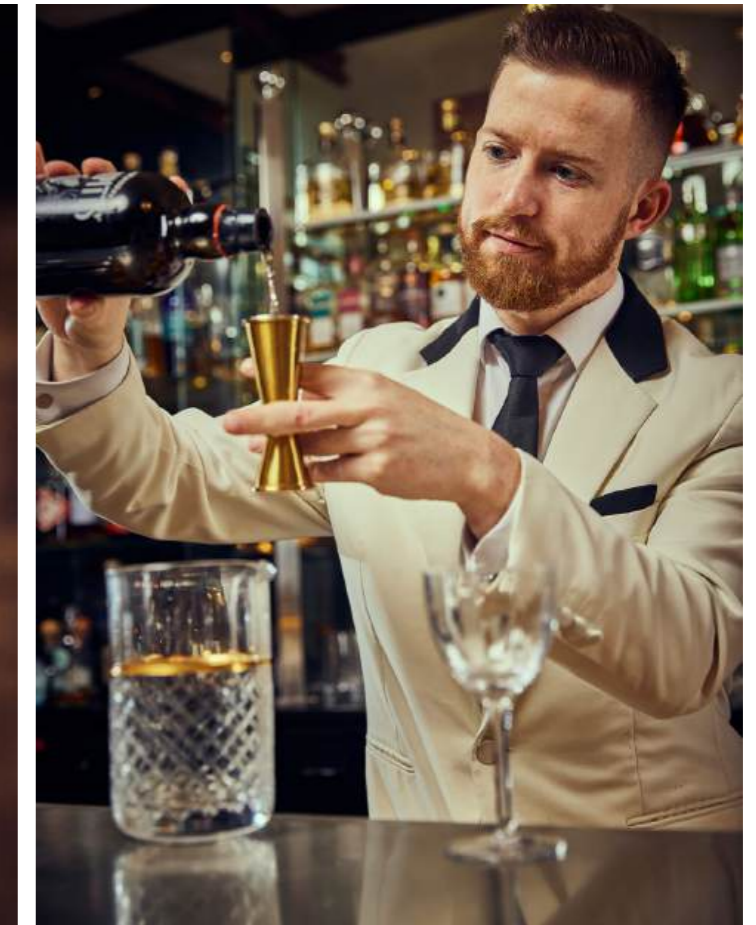
Located on the first floor of the hotel, redefines traditional dining while creating a unique destination that's both relaxing and luxurious. The central design ethos fuses 1930s elegance with an abundance of greenery, giving guests the sense of alfresco dining. WILDE's menus celebrate the finest Irish produce, combining much-loved local dishes with classic cuisine from around the world.



Located on Balfe Street, where Grafton Street and the Creative Quarter meet, Balfes is a vibrant all-day Bar and Brasserie combining the energy of a trendy New York eatery - complete with subway tiles and industrial-chic flourishes - and the relaxed elegance of a high end Parisian brasserie, Balfes serves the finest locally sourced produce.



THE SIDECAR



With its striking art deco feel, The Sidecar is a stylish, elegant and modern take on a 30's cocktail bar. Sip a cocktail in style at The Sidecar: choose from the timeless classics or signature creations while enjoying the Art Deco surroundings, or try a hand crafted martini tableside with our unique bespoke Martini Trolley.



EVENTS



Complementing The Westbury's luxurious style are its beautifully-appointed event spaces, ranging from the gracious Grafton Suite to seven flexible suites ideal for meetings, events and private dining. The Westbury offers the perfect venue - whatever the occasion.

SLICE *of the* CITY

WALK DUBLIN

From The Westbury, you can see most of central Dublin within 15 minutes. Indeed, James Joyce's great modern classic *Ulysses* takes the form of a one-day perambulation throughout the Irish capital, so to become a 'flaneur' in Dublin is to take part in a particular pedigree. You will flit from grand Georgian squares to cobbled alleys, making discoveries all the while.

Many start on Grafton Street, the pedestrianised shopping street near the hotel, and a real meeting place. It is here that you might well encounter one of Dublin's multifarious buskers. They are often of a very high quality as the street is becoming known for being a place where talent is launched. Come here at Christmas and you might even hear Bono, who does a famous annual charity busk.

This is the older, better-known Dublin – but there's a newer city to discover too. Slip out of The Westbury's Clarendon Street entrance and you will emerge in the 'Creative Quarter', a central district that includes such historic thoroughfares as South William Street, George's Street, Lower Stephen Street and Exchequer Street. This area is now a fantastic hub of Irish design and innovation: from boutiques and artists' studios to cafés and restaurants. See the fashion shops then, for a change of pace, browse in George's St Arcade:



Ireland's oldest shopping centre, full of quirky stalls. At Grafton Street's northern end is St Stephen's Green, one of the loveliest 19th century urban parks in northern Europe, with ducks, flowers and a garden devoted to William Butler Yeats.

Close by is Dublin's key museum quarter, where you step from wide streets into noble storehouses such as the National Museum of Archaeology and History and the National Gallery of Ireland. They'll swallow a few hours of anyone's time, by which time you'll be ready for coffee.

You can caffeinate at Kaph on Drury Street, a coffee connoisseur's delight. Try one of their madeleine cakes with a flat white – a real restorative.

Head down to Temple Bar. By night this revived industrial area is crowded with revelers and by day is a handsome collection of cobbled streets, pubs, vintage shops and great coffee and cake pit-stops such as Queen of Tarts in nearby Dame Street. The Temple Bar Food Market is truly a foodies paradise



and well worth a look for all kinds of fine artisan produce and even Irish-made red wine!

The serious flaneur should then head over one of the River Liffey's array of fine bridges to the rivalrous North Side. Walk west to the rejuvenated Smithfield area – then end at the Hugh Lane Gallery at Parnell Square, which has a marvelous recreation of Francis Bacon's paint-spattered studio as a permanent exhibit.

Then, perhaps time to reward yourself with a sundowner after a long, lustrous day's walk in Dublin.



ATTRACTIONS

Within a 5 to 10-minute walk: Trinity College Museum, National Gallery, National Museum, Gaiety Theatre. Within a 20-minute walk: Guinness Storehouse, 3Arena

TRAVEL HUBS

Within a 10 to 15-minute drive: Connolly Rail Station, Heuston Rail Station. Within a 30-minute drive: Dublin International Airport

CONFERENCE VENUES

Within a 10-minute drive: Dublin Convention Centre, Royal Dublin Society (RDS).

OUR FACILITIES

Total Bedrooms: 201 | Suites: 30 | Meeting Spaces: 11 | Max Meeting Capacity: 220

Business Centre | Fitness Suite | On-site Car Park | Valet Parking | Curbside Check-in | Jogging Station | Complimentary Wi-Fi

Restaurant & Bars: The Gallery | Wilde | Balfes Bar & Brasserie | The Sidecar

Loyalty Programmes: LHW Leaders Club | DISCOVERY

MEETING & EVENTS SPACE CAPACITIES

Meeting and event spaces can be adapted for a wide variety of business and social events, from think-tanks to conferences, private dinners to fashion shows.

Room	Floor	Ceiling	Access	Theatre	Classroom	Boardroom	U-Shape	Dinner	Reception
GRAFTON	223.9m ²	3m	2.55 x 1.6m	180	90	60	50	150	200
GRAFTON 2	145m ²	3m	2.55 x 1.6m	110	55	40	36	100	130
GRAFTON 1	78.9m ²	3m	2.55 x 1.6m	60	36	30	30	50	60
SUFFOLK/	60.5m ²	2.7m	2 x 1.07m	45	24	20	-	20	-
KILDARE	56.32m ²	2.7m	2 x 1.5m	45	24	18	22	40	-
CLARENDON	43m ²	2.7m	2 x 1.07m	30	20	10	12	10	-
WICKLOW	36m ²	2.7m	2.1 x 1.4m	25	16	8	10	8	-
TRINITY	36m ²	2.7m	2 x 1.07m	-	-	18	-	18	-
DAWSON	30.3m ²	2.7m	2 x 1.07m	-	8	8	-	8	-
SUFFOLK	29.2m ²	2.7m	2 x 1.07m	15	8	8	-	8	-
EXCHEQUER	24.8m ²	2.7m	2.3 x 1.5m	-	-	8	-	8	-

BOOKING CODES

GDS: Galileo LW 8564 | Sabre LW 11036 | Amadeus LW DUB551 | Worldspan LW 00551

CONTACT

f /TheWestburyHotel t @WestburyDublin i @WestburyDublin

Grafton Street, Dublin 2, D02 CH66, Ireland

T +353 1 679 1122 E westbury@doylecollection.com W doylecollection.com/westbury

ABOUT THE DOYLE COLLECTION

At the heart of our business is a warmth of service that stems from our family ownership, imbuing our properties with the familiarity of a member's club and the intimacy of a private home. Each of our eight hotels – landmark buildings in unrivalled city locations, has its own distinct personality that is rooted in, and authentic to, its neighbourhood.

Innovation and ongoing investment ensure a boutique, cosmopolitan yet local feel – as seen in our cool destination restaurants, bars and event spaces – while our heritage lends character to our vision of informal luxury, timeless style and the very best guest experience.

THE DOYLE COLLECTION

LUXURY

THE KENSINGTON

LONDON

THE MARYLEBONE

LONDON

THE BLOOMSBURY

LONDON

THE WESTBURY

DUBLIN

The Dupont Circle

WASHINGTON DC

URBAN

THE BRISTOL

BRISTOL HARBOURSIDE

THE RIVER LEE

CORK

THE CROKE PARK

DUBLIN

doylecollection.com

THE WESTBURY

THE DOYLE COLLECTION • DUBLIN

